

Pearson BTEC Levels 4 Higher Nationals in Engineering (RQF)

## **Unit 31: Electrical Systems and Fault Finding**

# **Unit Workbook 1**

in a series of 4 for this unit

Learning Outcome 1

## **Electrical Distribution Systems**

## Contents

INTRODUCTION .....	2
Operating principles.....	4
Three-phase distribution methods and connections.....	4
Single-phase distribution methods and connections .....	6
Earthing system connections .....	7
TT System .....	8
TN-C System .....	8
TN-S System.....	9
TN-C-S System .....	9
IT System .....	10
Transformer constructional features.....	11
Construction.....	11
Applications.....	12
Step Up Transformers .....	12
Step Down Transformers .....	12
Isolating Transformers .....	13
Shell Type Transformers .....	13
Core Type Transformers.....	14
Windings.....	15
Connections.....	16
Transformer Efficiency.....	18
Electrical Circuit Symbols.....	19
Electrical Layout Diagrams.....	20
Fault finding techniques and test equipment.....	21
Input/Output.....	21
Half Split .....	21
Meters.....	21
Insulation Testers.....	23
Typical Faults.....	23

## INTRODUCTION

LO1: Investigate the constructional features and applications of electrical distribution systems

***Operating principles:***

Three-phase, single-phase distribution methods and connections

Earthing system connections

***Transformer constructional features:***

Construction, application, characteristics of transformers such as step up/down, isolating, shell and core, windings, connections, efficiency

Electrical circuit symbols and layout diagrams

***Fault finding techniques and test equipment:***

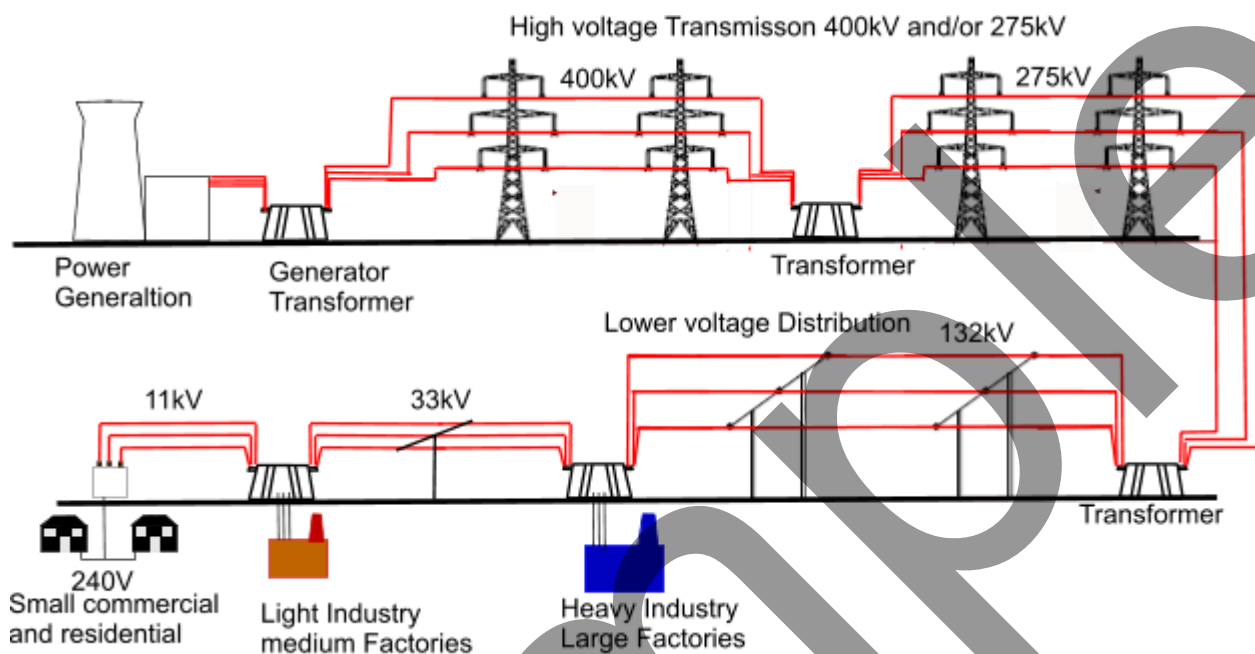
Input/output, half split

Meters, insulation testers

Typical faults found

## Operating principles

### Three-phase distribution methods and connections



**Figure 1** UK electrical power distribution from source to consumer

The source of electrical supply is, mainly, at a large power station. The common fuels used can be coal, nuclear, gas or oil. Other sources of supply are renewable in nature; bio-mass, hydro-electric, tidal, wind or solar.

At the power station, the fuel generates energy which turns turbines. These turbines generate 33kV of electricity. The voltage from each turbine is presented to switches, and a transformer. The switches are commonly oil filled (cooling) cylindrical tanks, one tank for each of the three phases. Each tank has an input and an output, and the switch is immersed in the oil beneath. The output from the switch is presented to a step-up transformer, also oil cooled, which transforms the input voltage on its primary to 400kV (sometimes 275kV) at its secondary winding, as per figure 1.

The three 400kV phases are then carried on cables suspended from large pylons. These cables tend to have a steel core surrounded by aluminium and are suspended from the pylon arms by large insulators. Further on, we see more localised distribution, where the 400kV is presented to a step-down transformer which produces 132kV. This 132kV is either presented to heavy industrial factories, or stepped down further, via another transformer, to 33kV. This 33kV is presented to light industrial factories or stepped down further to 11kV. The 11kV can be presented to light commercial industry, or to local sub-stations. The sub-stations

convert the 11kV, via a transformer, to 230/240 volts between each phase and neutral (assuming a star/gye arrangement for the three phases (see figure 2 and figure 3).

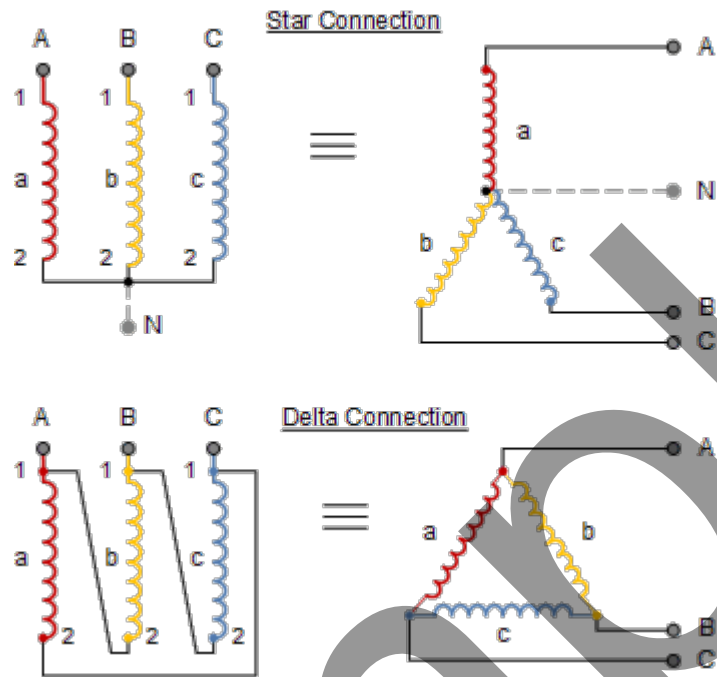


Figure 2 Star and Delta connections for a three-phase system

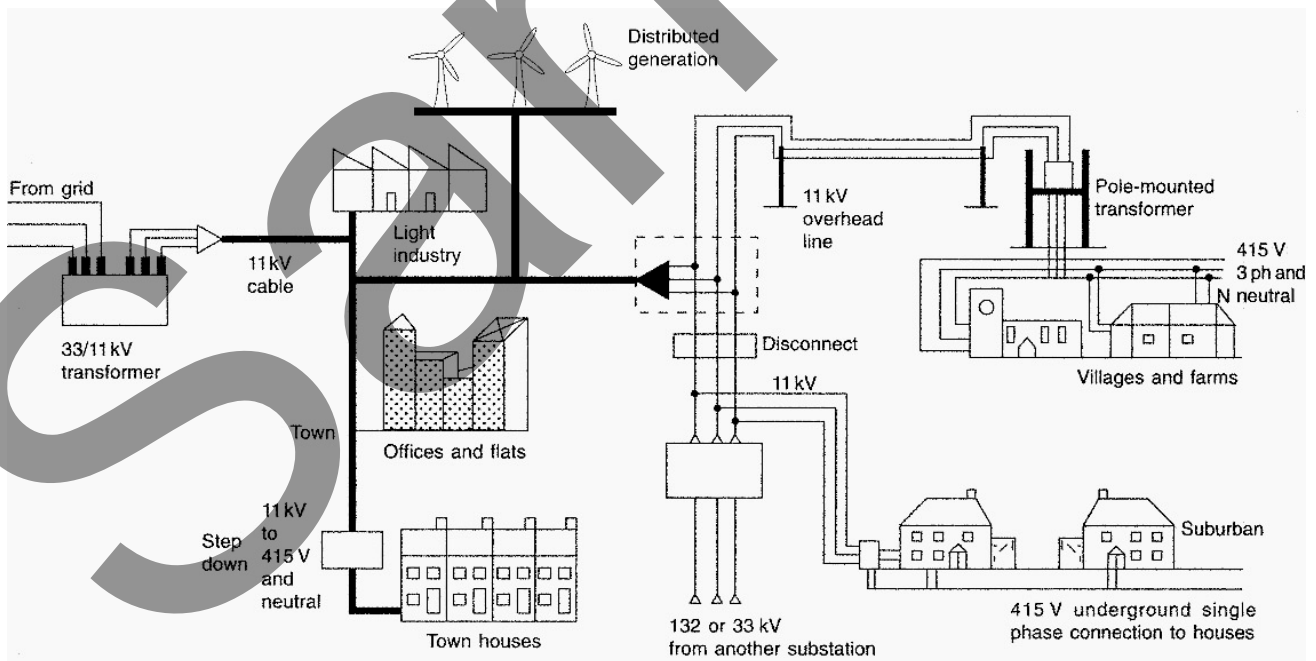


Figure 3 A closer view of the localised end of the electricity distribution network

An example of a three-phase transformer is shown in figure 4.



Figure 4 A three-phase transformer

### Single-phase distribution methods and connections

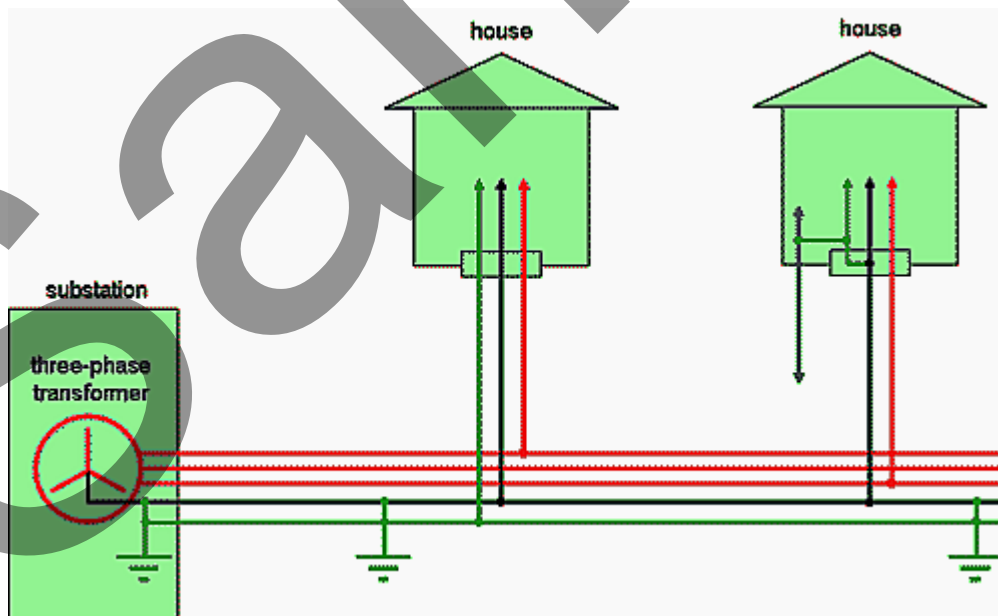


Figure 5 Distribution of alternate phases to residential dwellings

A residential dwelling normally has its electrical distribution arrangement in the form a Ring Circuit, as shown in figure 6.

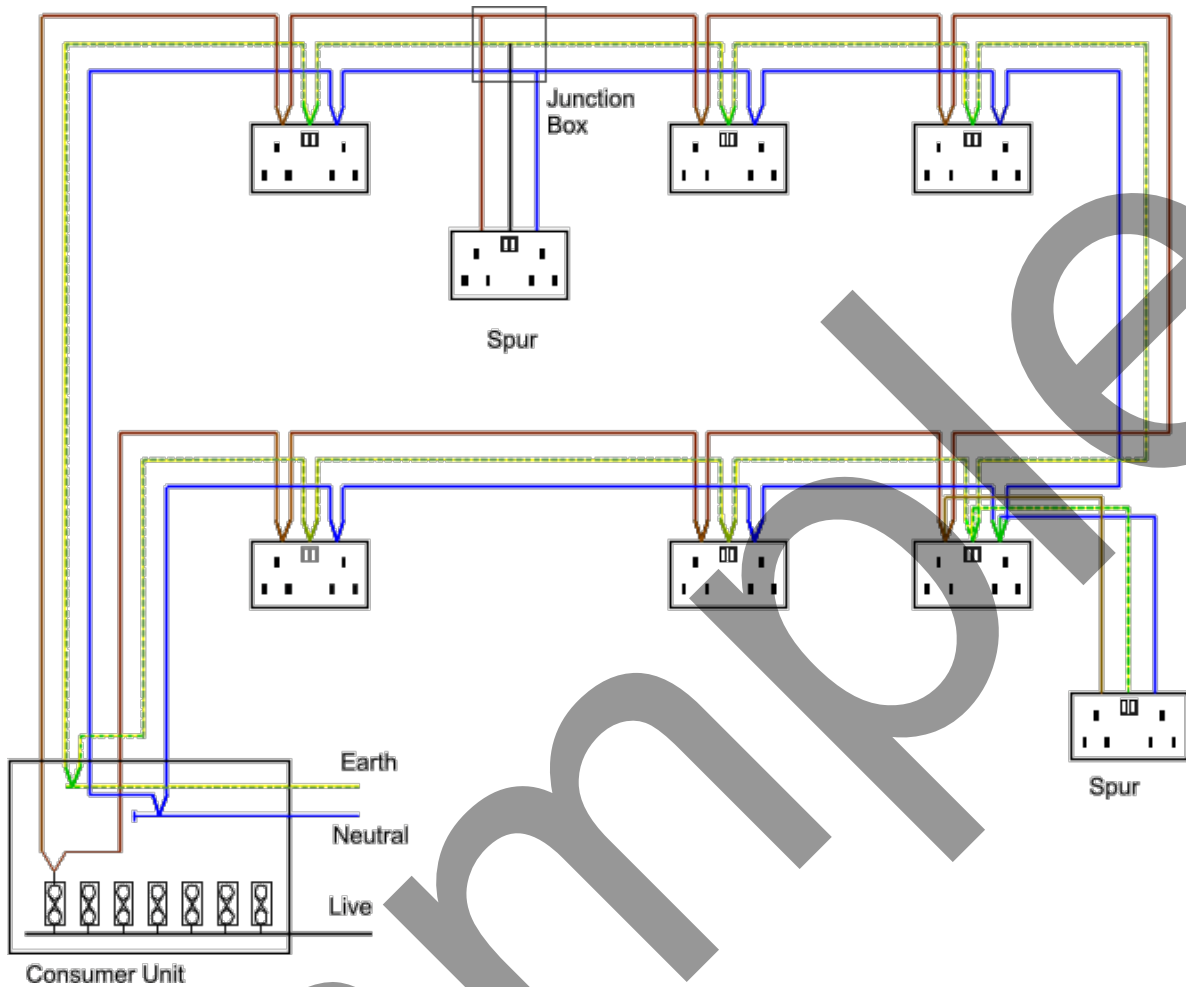


Figure 6 A residential ring circuit

The consumer unit (MCB) is protected by a 32A fuse, and the 230V supply is routed around the dwelling as shown.

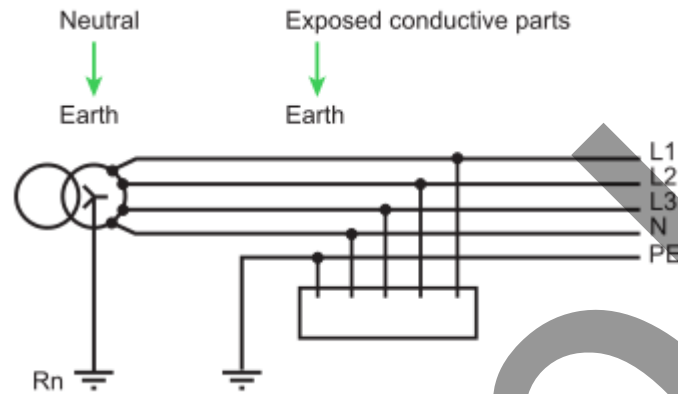
### Earthing system connections

Earthing systems can be classified by three schemes;

- TT System (earthed neutral)
- TN System (exposed conductors connected to neutral)
- IT System (impedance-earthed neutral)

## TT System

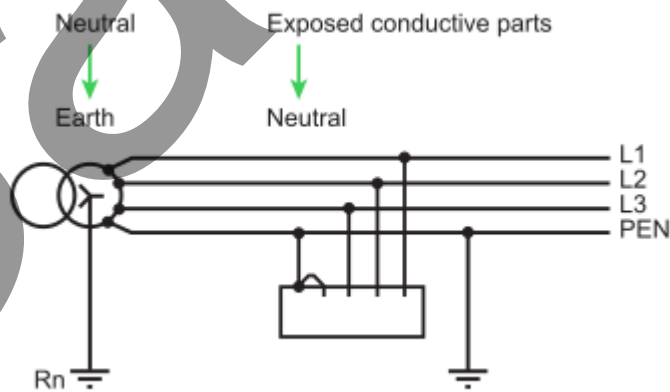
Here the neutral is connected to earth at its source. All other exposed metallic parts are connected to a separate earth rod, which could possibly be connected to the source neutral. This arrangement is shown in figure 7.



**Figure 7** The TT earthing scheme

## TN-C System

In this arrangement the neutral is used as a protective conductor, known as a PEN (Protective Earth and Neutral). The system is not allowed for portable devices, nor when the conductors have a cross-sectional area of less than 10mm<sup>2</sup>. An equipotential environment is necessary here, so the system needs regularly distributed earth electrodes. The arrangement is shown in figure 8.



**Figure 8** The TN-C earthing scheme